



**PERFORMANCE REPORT**

**2015**

**NATIONAL PHYSICAL PLANNING DEPARTMENT**

**MINISTRY OF MEGAPOLIS & WESTERN DEVELOPMENT**

## Contents

• Contents	01
• Acknowledgement	02
• Vision and Mission	03
01. Director General’s Message	04
02. Structural Framework of the Organization	06
03. Approved Staff of the Organization	07
04. List of the staff of the Department	12
05. Performance of the Control Division	13
06. Performance of the Regional Physical Planning division	19
07. Performance of the Local Physical Planning division	31
08. Performance of the Research Division	36
09. Performance of the Engineering Division	37
10. Performance of the Architecture Division	40
11. Performance of the Accounts Division	43

## **Acknowledgement**

Town and Country Planning Department was established under the Town and Country Planning Ordinance No. 13 of 1946, in the year 1947. Since the necessity of a sustainable Development Process together with sectorial development linked with regional development arose, this department was converted to National Physical Planning Department under the Town & Country Planning (Amendment) Act, No. 49 of 2000,

Accordingly, first of all, I would like to offer my heartiest gratitude towards all of the staff who dedicated in achieving the goals of the department, in the year 2015.

Further, I wish to offer my gratitude, on behalf of the staff of this department, for all the officers and staff Ministry of Policy Planning, Economic Affairs, Child, Youth, Cultural, and Ministry of Megapolis and Western Development for their directions, guidance and heartiest collaboration which enabled in performing duly service by the department. Likewise, I would also wish to offer the gratitude for all district secretaries, divisional secretaries, mayors, chairmen, commissioners and secretaries of provincial councils for their invaluable collaboration for planning functions of the department.

Finally, I would like to thank all the public institutions, other respective institutions and personnel who contributed miscellaneous support in carrying out the functions of the department in the year 2015.

Dr. Jagath Munasinghe,  
Director General  
National Physical Planning Department

### **Mission**

“To formulate national physical policies, plans and strategies and to ensure and monitor the implementation of such national policies and plans through regional and local plans with the object of promoting and regulating integrated planning of economic, social, physical and environmental aspects of land and territorial waters of Sri Lanka.”

## **01. Director General's Message**

Housing and Town Improvement Ordinance No 19 of 1915 was enforced with the objective of addressing issues of construction of dwellings in and around the settlements in Colombo, the capital city, during the British era. But, there had been certain constraints for the development of cities as a consequence of the harbor and railways which were not covered by the aforesaid act. As a remedial measure to address these constraints, town and country planning department was established under the “Town and Country Planning Ordinance No 13 of 1946. Thereinafter, development schemes for implementation of settlement plans commenced, in Island-wide connecting all the local governments.

Ignorance of development initiatives in the peripheral regions resulted in poverty, disparity in resource distribution and allocation, income disparity, as a consequence of messy developmental initiatives without proper planning and future vision, centralization of administration on Colombo and other main cities, and emergence of unrest and grievances from the majority of marginalized population who sustained upon the subsidies as they neither had lucrative livelihood nor basic facilities. This scenario felt the necessity of overall, sustainable development process together with sectoral and Regional development.

As a remedial measure, the National Physical Planning Department was established in year 2000 under the amendments to the Town and Country Planning Ordinance No.13 of 1946 made by the Amendment Act No.49 of 2000, aimed at formulating a National Physical Planning based upon a National Physical Planning Policy.

The Mission of the Department is “to formulate national physical policies, plans and strategies and to ensure and monitor the implementation of such national policies and plans through regional and local plans with the object of promoting and regulating integrated planning of economic, social, physical and environmental aspects of land and territorial waters of Sri Lanka.”

Accordingly, the National Physical Planning Department possesses a renowned history of seven decades in formulation, implementation and updating the National, Provincial and Regional Physical Planning, formulation of planning for the development of sacred lands, architectural and engineering designs together with relevant layouts.

The National Physical Planning department has played and has been paying a pivotal and immense role as a Focal Public Establishment in Planning through optimizing the utility of scarce natural resources, ensuring environmental protection, planning for new towns

with comprehensive infrastructure and urban facilities and establish them in a natural disaster resilient manner, recognizing applicable new urban indicators to Sri Lanka, identification of suitable industrial parks to Sri Lanka to absorb strategic economic development opportunities and thereby ensuring Sustainable Economic Development, in collaboration with all the local government establishments, Island-wide.

This is a collaborative and collective effort by the main divisions such as National Physical Planning Division, Provincial Physical Planning Division, Regional Physical Planning Division, Research Division together other collaborative divisions – control, Engineering, Accounting, and Architecture divisions. The comprehensive reports on the performance of each aforesaid divisions has been depicted separately under each chapters hereunder, for the year 2015.

The Ministry of Mega Polis and Western Development, the leader in mega polis development in Sri Lanka and other affiliated establishments played a pivotal role by implementing different programmes in celebration of “World Cities Day 2015” and it is worthwhile to express that the contribution made by the National Physical Planning Department is noted as a key performance for the year 2015.

I am much pleased to express that the future planning shall be aimed at implementation of eliminating regional socio-economic disparities, to empower a motivated and dedicated human resources that would ensure achieving the Nobel and dignified objective of ensure endowment of prosperous country to the motherland.

Dr. Jagath Munasinghe,

Director General

National Physical Planning Department

## 2. Organizational Chart (Organogram)

### 3. National Physical Planning Department – Approved Staff

Serial Number	Position	Service	Grade	Salary Category	Approved number
1.	Director General	Departmental	Special	SL 3-2006	1
2.	Additional Director General (Planning)	Departmental	Special	SL 3-2006	1
3.	Additional Director General (implementation)	Departmental	Special	SL 3-2006	1
4.	Director (Control)	Sri Lanka Administrative service	1	SL 1-2006	1
5.	Chief Accountant	Sri Lanka Accountancy Service	1	SL 1-2006	1
6.	Director (Engineering)	Sri Lanka Engineering Service	1	SL 1-2006	1
7.	Director	Sri Lanka Architectural Service	1	SL 1-2006	1
8.	i Director (Regional Physical Planning) ii Director (Regional Physical Planning) iii Director (Research) iv Director (Coordination & Monitoring)	Departmental	1	SL 1-2006	4
9.	Assistant Director (Control)/Deputy Director	Sri Lanka Administration Service	111/11	SL 1-2006	1
10.	Internal Auditor	Sri Lanka Accountancy Service	11	SL 1-2006	1
11.	Accountant	Sri Lanka Accountancy Service	111/11	SL 1-2006	1
12.	Assistant Director Deputy Director (Engineering)	Sri Lanka Engineering Service	111/11	SL 1-2006	3
13.	Assistant Director Deputy Director (Town Planning)	Departmental	111/11	SL 1-2006	20



14.	Assistant Director Deputy Director	Sri Lanka Architectural Service	111/11	SL 1-2006	2
15.	Legal Officer	Departmental	111/11	SL 1-2006	1
16.	Administrative Officer	Sri Lanka Management Assistant Service	Super grade	MN 7-2006	1
17.	Planning Office Assistant	Sri Lanka Technical Service	Special	MN 7-2006 A	3
18.	Senior Quantitative Surveying Assistant	Sri Lanka Technical Service	Special	MN 7-2006 A	1
19.	Chief Overseer	Sri Lanka Technical Service	Special	MN 7-2006 A	2
20.	Information and Communication Technology Officer	Sri Lanka Information and Communication Technology Service	2-11/1	MN 6-2006 A	1
21.	Development Officer	Development Officer Service	111/11/1	MN 4-2006 A	20
22.	Physical Planning Assistant (Town Planning)	Departmental		MN 4-2006 A	14
23.	Physical Planning Assistant (Architecture)	Departmental		MN 4-2006 A	1
24.	Development Assistant	Departmental (Subject to termination of the post without filling the vacancy)		MN 4-2006 A	3
25.	Overseer/Industrial Officer	Sri Lanka Technical Service	111/11/1	MN 3-2006 A	9
26.	Planning Technician	Sri Lanka Technical Service	111/11/1	MN 3-2006 A	21
27.	Quantitative Surveying Assistant	Sri Lanka Technical Service	111/11/1	MN 3-2006 A	7
28.	Management Assistant	Public Management Assistant Service	111/11/1	MN 2-2006 A	34
29.	Receptionist	Departmental	111/11/1	MN 1-2006 A	1
30.	Geographical Information System (GIS)	Departmental	111/11/1	MT 2-2006 A	6
31.	Driver	Drivers Service	111/11/1	PL 3-2006 A	14

			Special		
32.	Planning Printer	Departmental	111/11/1 Special	PL 1-2006 A	2
33.	Surveying Assistant	Departmental	111/11/1 Special	PL 1-2006 A	3
34.	Planning in-charge	Departmental	111/11/1 Special	PL 1-2006 A	1
35.	Planning updater	Departmental	111/11/1	PL 1-2006 A	1
36.	Office Assistant	Office Assistant Service	111/11/1 Special	PL 1-2006 A	17
37.	Bungalow Keeper	Departmental	111/11/1 Special	PL 1-2006 A	4
38.	Watchman	Departmental	111/11/1 Special	PL 1-2006 A	4
39.	Overseer	Departmental		PL 3-2006 A	5
40.	Labourer	Departmental		PL 1-2006 A	40
41.	Watchman	Departmental		PL 1-2006 A	4
42.	Tourist Bungalow Assistant	Departmental		PL 1-2006 A	5
43.	Park Assistant (Gardener)	Departmental		PL 1-2006 A	4
44.	Sanitary Assistant	Departmental		PL 1-2006 A	5
Total					273

In addition to this, staff exclusively approved for the sacred lands

<b>115</b>					
<b>45</b>	<b>Overseer</b>	Departmental		MT2-2016A	<b>2</b>
<b>46</b>	<b>Overseer</b>	Departmental		PL 1-2016 A	<b>7</b>
<b>47</b>	<b>Watchman</b>	Departmental		PL 1-2016 A	<b>13</b>
<b>48</b>	<b>Laborer</b>	Departmental		PL 1-2016 A	<b>91</b>
Total					<b>113</b>

Source – Department source

#### **4. List of the staff of the Department from 01.01.2015 to 31.12.2015**

1. Director General – Mr. N.V. Kurukulasooriya
2. Director - Engineering- Miss P.P.G. Dias-Upto 02<sup>nd</sup> May of 2015
3. Director-Local Physical Planning-Mrs.C.Amarasinghe
4. Chief Accountant – Mrs. R.P. Susantha
5. Director - Engineering – Mr. C. Kularathna- From 22<sup>nd</sup> December of 2015
6. Assistant Director (Engineering) – Mr. K.Sumanadasa
7. Assistant Director (Control) – Mrs. N.G.P.G. Samarawickrama
8. Accountant – Mrs. T.C. Pushpakumari
9. Assistant Director (Architecture) – Mr. C.W.K.Bandaranayake
10. Administrative Officer- Mr.D.N.Dikkumbura
- 11.Chief Overseer- Mr. K.D.H.S. De Silva

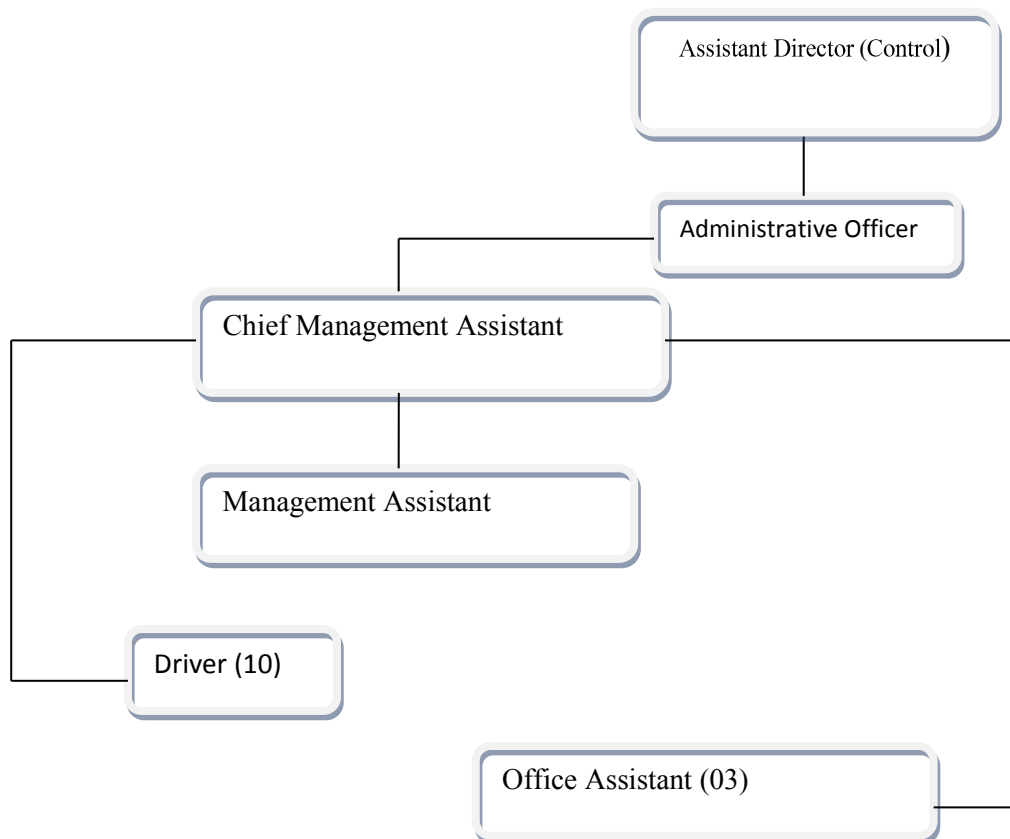
## 05. Performance of the Control Division

The core role of the control division is to facilitate ancillary services required in achieving objectives that are expected to be reached through the mission of the department, in an efficient and effective manner.

In this context, the control department plays a vital role in human and physical resource management, establishment and administrative functions, implementation of policy decisions, provision of ancillary services for all other divisions of the department, management and administration of the staff of sacred lands.

Although control division comes under the direct supervision of the Director (Administration of the division, since 01<sup>st</sup> January 2015, the division functioned under the direct supervision of the Assistant Director (Administration) as the position remain vacant. The division comprise of 27 staff members.

**Diagram 01: Staff of the Control Division**



Source – Departmental Source

## **5.1 Main Objective of the Control Division**

- ❖ Preparation of letterhead for the department under the direction of the Ministry
- ❖ Design and prepare the layout of the department
- ❖ Formulation of organogram of the department
- ❖ Make amendments to the staff in such a way to achieve the objectives of the department
- ❖ Formulation, obtaining approvals and implementation of procedures for recruitment and promotions
- ❖ Act as a focal point for capacity building, welfare and disciplines of the staff

## **5.2 Day-to-day routing duties include,**

- ❖ Attend day-to-day functions of postal communication
- ❖ Inter divisional and intra divisional coordination
- ❖ Attend request from the general public
- ❖ Attend request from the staff
- ❖ Maintenance of records and update personal files of the staff
- ❖ Management of transport units
- ❖ Relevant functions of employee salaries, allowances, travelling allowances and all other payments

Moreover,

- ❖ Attend and coordinate issues arising from the Parliament, complaints of the human rights commission, responding for public petition committees and Audit Queries.
- ❖ Carry out staff performance Assessment
- ❖ Conduct Efficiency Bar Examinations
- ❖ Be responsible for the security of the department
- ❖ Attend maintenance related
- ❖ Drafting Cabinet papers
- ❖ Administration of staff of sacred lands

As at 31.12.2016, the staff strength of sacred lands of the department accounted 386, in terms of individual tiles, the total number staff accounted 113.

### 5.3 Details of the staff as at 31.12.2016

No	Staff Category	Title of the position	Service of the title	Salary category	Total employees approved	Staff currently available	Vacancies as at 31.12.2016
1	Senior Executive	Director General	Departmental	SL 3/2006 Special	1	0	1
2	Senior Executive	Additional Director General Implementation 01 Planning 01	Departmental	SL 3/2006 Special	2	0	2
3	Executive	Director (Control)	Sri Lanka Administration Service - 1	SL 1/2006	1	0	1
4	Executive	Chief Accountant	Sri Lanka Accountancy Service - 1	SL 1/2006	1	1	0
5	Executive	Director (Engineering)	Sri Lanka Engineering Service -1	SL 1/2006	1	1	0
6	Executive	Director	Departmental	SL 1/2006 - Grade 01	4	2	2
7	Executive	Director	Sri Lanka Architectural Service - 1	SL 1/2006	1	0	1
8	Executive	Deputy Director / Assistant Director (Control)	Sri Lanka Administrative Service - 11 / 111	SL 1/2006	1	1	0

10	Executive	Internal Auditor	Sri Lanka Accountancy Service 11	SL 1/2006	1	0	1
9	Executive	Accountant	Sri Lanka Accountancy Service - 11/111	SL 1/2006	1	1	0
11	Executive	Deputy Director / Assistant Director (Engineering)	Sri Lanka Engineering Service -11/111	SL 1/2006	3	1	2
12	Executive	Deputy Director / Assistant Director	Sri Lanka Architectural Service - 1-11/111	SL 1/2006	2	2	0
13	Executive	Deputy Director / Assistant Director (Town Planning)	Departmental	SL 1/2006 (111,11 Grade)	20	0	20
14	Executive	Legal Officer	Departmental	SL 1/2006 (111,11 Grade)	1	0	1
15	Tertiary	Administrative Officer	Public Management Assistant Service Super Grade	MN 7/2006 A	1	1	0
16	Tertiary	Senior Quantitative Survey Assistant	Sri Lanka Technical Service -Special	MN 7/2006 A	1	0	1
17	Tertiary	Chief Overseer (Special Grade)	Sri Lanka Technical Service -Special	MN 7/2006 A	2	0	2
18	Tertiary	Planning Office Assistant	Sri Lanka Technical Service -Special	MN 7/2006 A	3	0	3
19	Tertiary	Technical Officer – Information and Communication	Sri Lanka Information and Communication Technical Service	MN 6/2006 A II/I	1	0	1



20	Secondary	Development Assistant	Departmental	MN 4/2006 A	3	3	0
21	Secondary	Development Officer	Development Officer Service-111/11/ 1	MN 4/2006 A	20	20	0
22	Secondary	Physical Planning Assistant (Town Planning)	Departmental	MN 4/2006 A	14	14	0
23	Secondary	Physical Planning Assistant (Architecture)	Departmental	MN 4/2006 A	1	1	0
24	Secondary	Planning Technician	Sri Lanka Technical Service-111/11/1	MN 3/2006 A	21	13	8
25	Secondary	Overseer / Technical Officer	Sri Lanka Technical Service-111/11/1	MN 3/2006 A	9	2	7
26	Secondary	Quantitative Survey Assistant	Sri Lanka Technical Service-111/11/1	MN 3/2006 A	7	0	7
27	Secondary	Public Management Assistant	Public Management Assistant Service 111/11/1	MN 2/2006 A	34	20	14
28	Secondary	Geographical Information System Technical Officer	Departmental	MT 2/2006 A	6	0	6
29	Primary (non-technical)	Receptionist	Departmental - 111/11/1	MN 1/2006 A -	1	1	0

30	Primary	Planning printer	Departmental - 111/11/1/Special	PL 1/2006 A	2	0	2
31	(non- technical)	Surveying Assistant	Departmental - 111/11/1/ Special	PL 1/2006 A	3	2	1
32	Primary	Planning in-charge	Departmental - 111/11/1/ Special	PL 1/2006 A	1	0	1
33	(non- technical)	Planning updater	Departmental - 111/11/1	PL 1/2006 A	1	1	0
34	Primary	Driver	Integrated Driver's Service 111/11/1/Special	PL 3/2006 A	14	10	4
35	Primary (non- technical)	Office Assistant	Office Assistant 111/11/1/ Special	PL 1/2006 A	17	13	4
36	Primary	Bungalow Keeper	Departmental - 111/11/1/ Special	PL 1/2006 A	4	4	0
37	(non- technical)	Watchman	Departmental - 111/11/1/ Special	PL 1/2006 A	4	3	1
38	Primary	Overseer	Departmental	PL3- 2006A	5	0	5
39	Primary	Laborer	Departmental	PL1- 2006A	40	40	0
40	(non- technical)	Watchman	Departmental	PL 1/2006 A	4	3	1
41	Primary	Tourist Bungalow Assistant	Departmental	PL1- 2006A	5	0	5
42	(non- technical)	Garden Laborer	Departmental	PL1- 2006A	4	2	2

43	Primary (non-technical)	Sanitary laborer	Departmental	PL1-2006A	5	3	2
			Departmental	එකතුව	<b>273</b>	<b>165</b>	<b>108</b>
44	Primary	Overseer	Departmental	MT2-2006A	2	2	0
45	(non-technical)	Overseer	Departmental	PL1-2006A	7	7	0
46	Primary	Watchman	Departmental	PL1-2006A	13	13	0
47	Primary (non-technical)	Laborer	Departmental	PL1-2006A	91	91	0
				<b>Total</b>	<b>113</b>	<b>113</b>	<b>0</b>
<b>Grand Total</b>					<b>386</b>	<b>278</b>	<b>108</b>

**Director (Research), Acting for the position of Director General**

**Assistant Director (Control), performed the duties as the Acting Director (Control),**

Source – Department Source

## **06. Performance of Regional Physical Planning Division**

### **6.1 Purpose**

The main role of the division is the National Physical Planning, formulation of the policy for the National Physical Planning and formulation of Regional Physical Planning which is the key task of this organization.

### **6.2 Staff**

The position of Director of this division remained vacant in year 2015 while the duties of the division were also performed by the Director of Regional Physical Planning division. The role of the division was carried out by 09 Physical Planning Assistants.

### **6.3 National Physical Planning and policy formation**

The National Physical Planning Policy and the Plan is very crucial to utilize the economic development opportunities available within the Island and in the world strategically, using physical resources that are found internally and externally, coordination of physical development process nationally and internationally, mitigating existing social, economic and physical disparities, conserving and promoting natural environment network and environmentally high sensitive areas, and establishing ecofriendly environment with settlements, towns and other infrastructural facilities and forest in appropriate places, and enhancing the benefits of national economy by two, third folds.

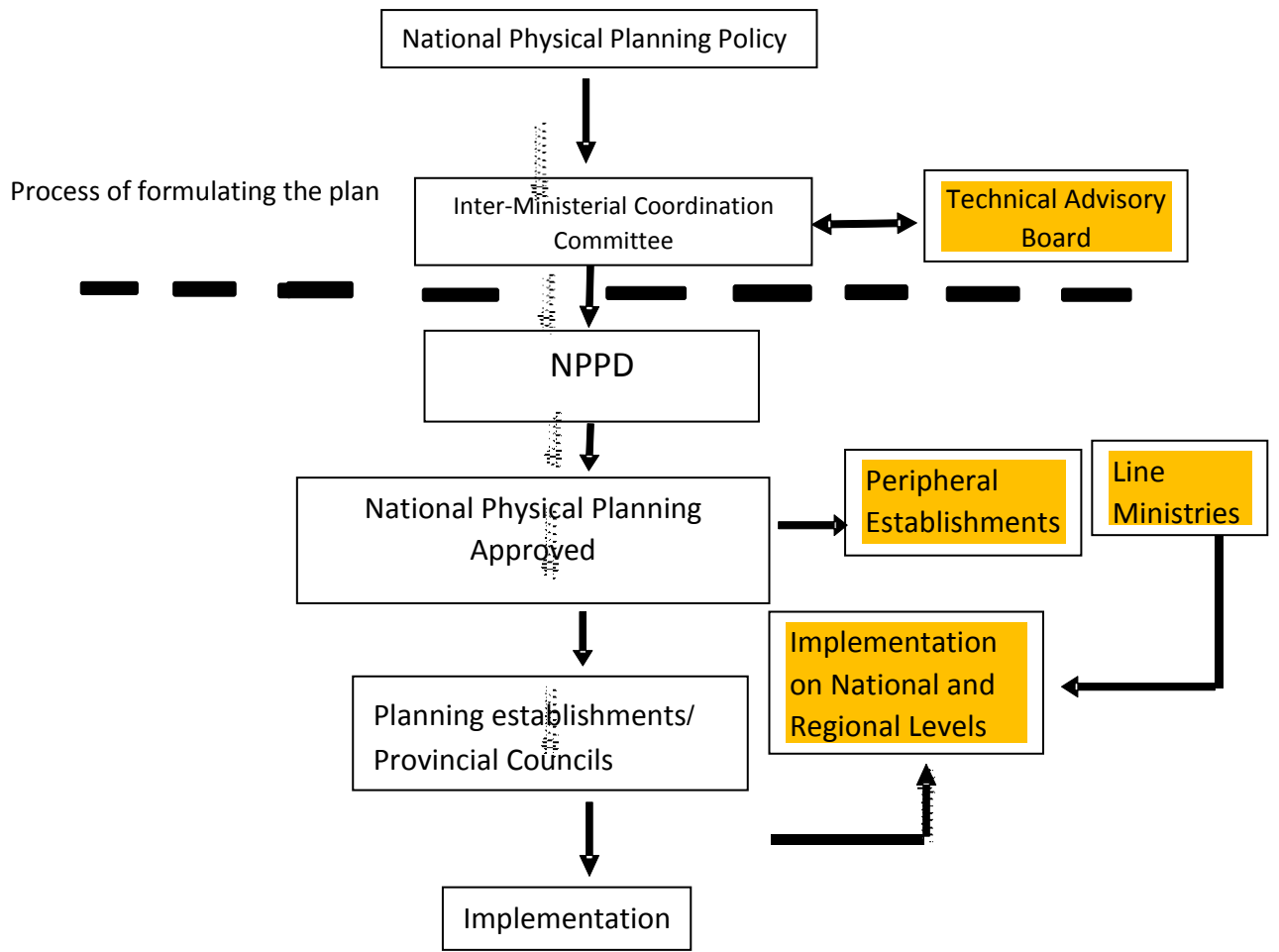


Diagram 02: Process of Formulating the National physical Plan

## **6.4 Activities carried out in the year 2015**

### **6.4.1 Simplification of National Physical Planning Policy**

The National Physical Planning Policy is formulated in achieving basic objectives such as mitigating zonal and regional disparities in development initiatives by creating opportunities whereby the respective regions function autonomously through self-formulated plans in accordance with the requirements and opportunities, achieving overall development through recognizing optimal utilization and creating opportunities for utilization of such resources, establishment of system of settlement that secures the environment, properties and human lives, establishment of standard of Sri Lanka within the Globalization and ensuring sustainable development. Accordingly, the National Physical Planning Policy has been approved by the National Physical Planning Committee (NPPC) chaired by his excellency president of Sri Lanka, in the year 2011. Currently, the said planning policy is been updated with required amendments to suit for the application in physical planning for any establishment.

### **6.4.2. Amendments made to National Physical Planning**

The National Physical Planning Policy which aimed in achieving the aforesaid objectives, has received the approval of the National Physical Planning Committee (NPPC) chaired by his excellency president of Sri Lanka, in the year 2011. Required amendments are being carried out to update the said plan, in order to improve to implementation standard of National Physical Planning having bridged the gaps and maladjustments experienced from Physical Plan which has already been formulated and plans formulated by other establishments.

### **6.4.3. Bridge the gaps of maladjustment of the National Physical Plan**

- 1 To bridge the gap of maladjustment (Amendment) of the National Physical Planning  
A workshop was conducted in collaboration with Disaster Management Center in April, 2015
2. Extending the contribution to formulate the National Environmental Physical Planning steered by the Ministry of Environment

#### **6.4.4 Formulation of planning strategies for the high-sensitive coastal environmental zone in Sri Lanka.**

Formulation of planning strategies for high sensitive coastal environmental zone aims at avoidance of environmental issues encounter by the respective regions and to formulate appropriate strategy that suit to development initiatives that are carried out within the region.

In this context, 74 divisional secretariats located in and around the coastal belt around the island have been recognized as high sensitive areas and further said divisional secretariats are being intensively studied.

##### **Objectives**

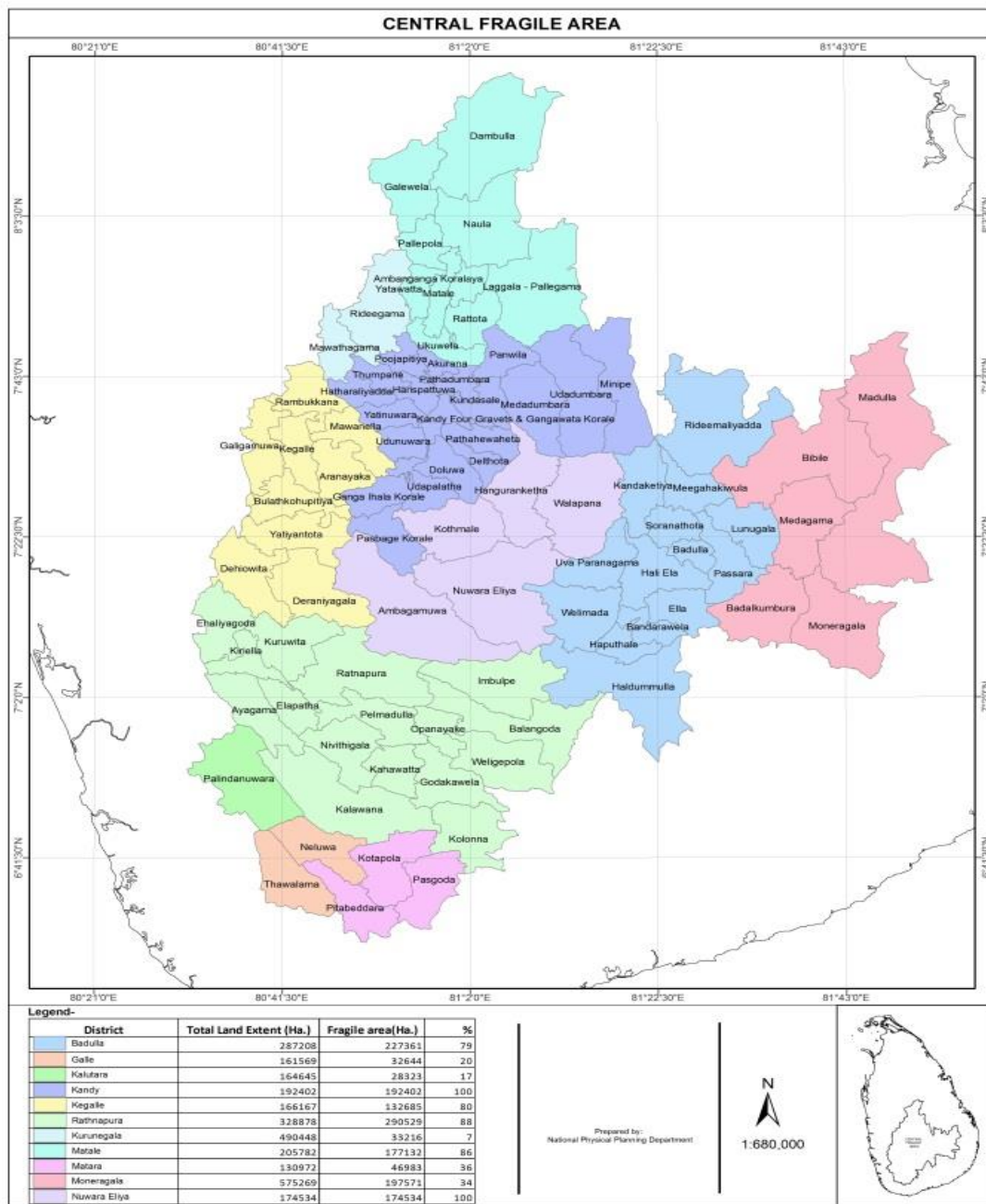
1. Adopting required initial measures to mitigate the damages created to the residents in and around the coastal belt of Sri Lanka by tide.
2. mitigating the damages on the land utilization pattern and development initiatives in and around the coastal belt during the tide.
3. maintaining the marine coastal belt as an avenue of income to the economy of Sri Lanka and as a recreational region for the people.

#### **6.4.5 Formulation of alternative settlement plan to evacuate the people from the disaster affected/ vulnerable areas in the divisional secretariats located in the environmentally high sensitive areas.**

Environmentally high sensitive regions refer to the geographical location with above 300 meter elevation from the sea level which are environmentally high sensitive. These areas are most likely prone to disaster situations due to informal land utilization patterns and national reasons. These scenario creates serious repercussions such as lose of properties and human lives. The core objective of the concept of central environmentally high sensitive areas is to formulate suitable guidelines that ensure formal land utility patterns and resettlement system to avoid such situations.

This region accounts 23.4% area of the overall extent of land in Sri Lanka, amounting approximately 15000 km<sup>2</sup>. The region spread throughout 87 divisional secretariat in 11 administrative districts where 5.5 million population live. Districts of Kandy and Nuwaraeliya completely belong to the said region while certain geographical portion of

Badulla, Matale, Rathnapura, Kegalle, Matara, Galle, Kalutara, Moneragala and Kurunegala district locate within the region.



Map 01 : Environmentally high sensitive areas.



Formulation of comprehensive planning for the central high sensitive areas was carried out in three (03) main phases under divisional secretariat levels.

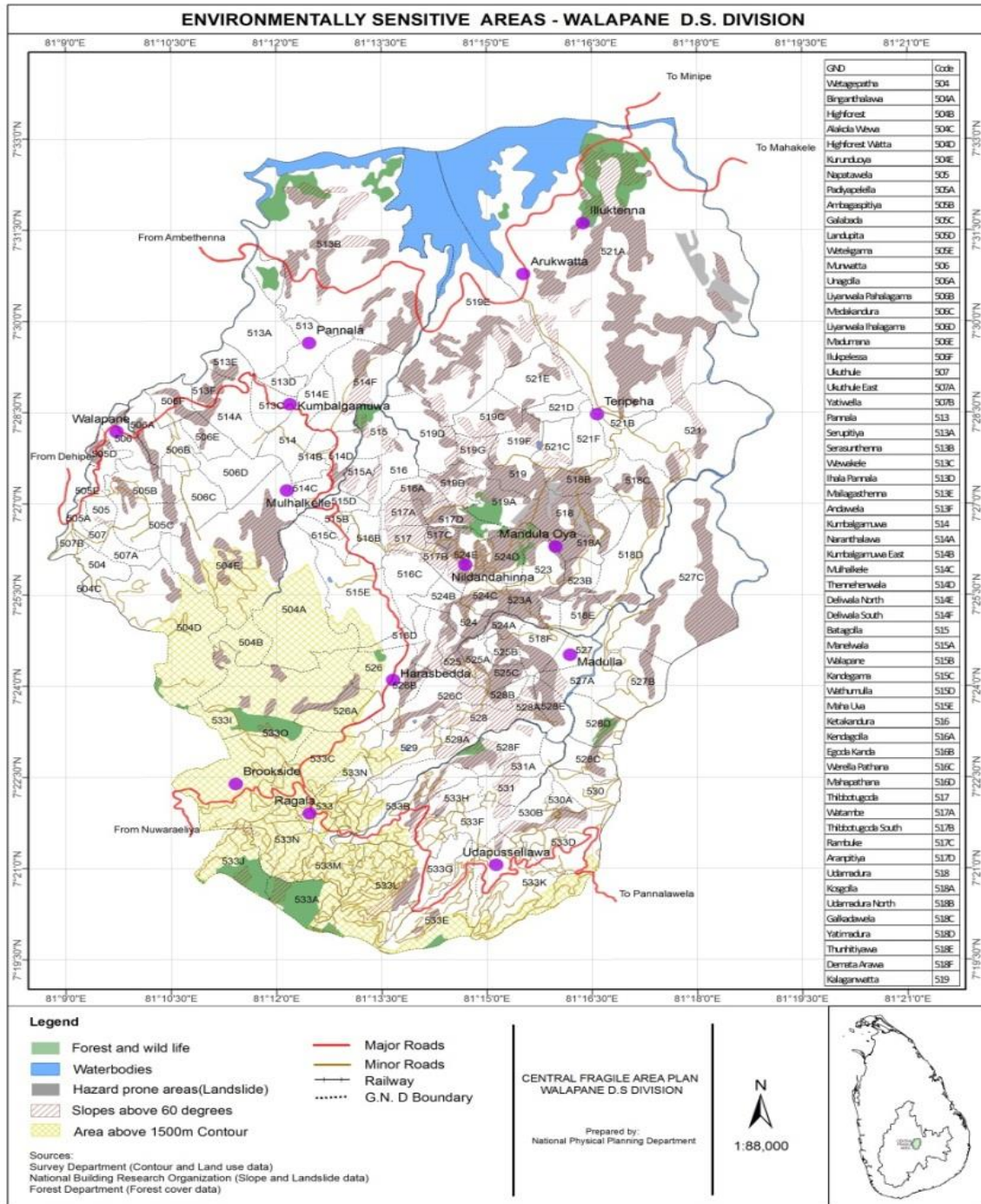
01. identification and mapping of basic disaster prone areas.

02. Identification and mapping of basic disaster prone and settlements that should be evacuated

03. Identification of appropriate lands/areas to evacuate and resettle the residents of vulnerable areas and formulation of resettlement plans

❖ Identification and mapping of basic disaster prone areas

As at now, this phase has been accomplished and prepared 87 maps in respective divisional secretariats as can be seen below

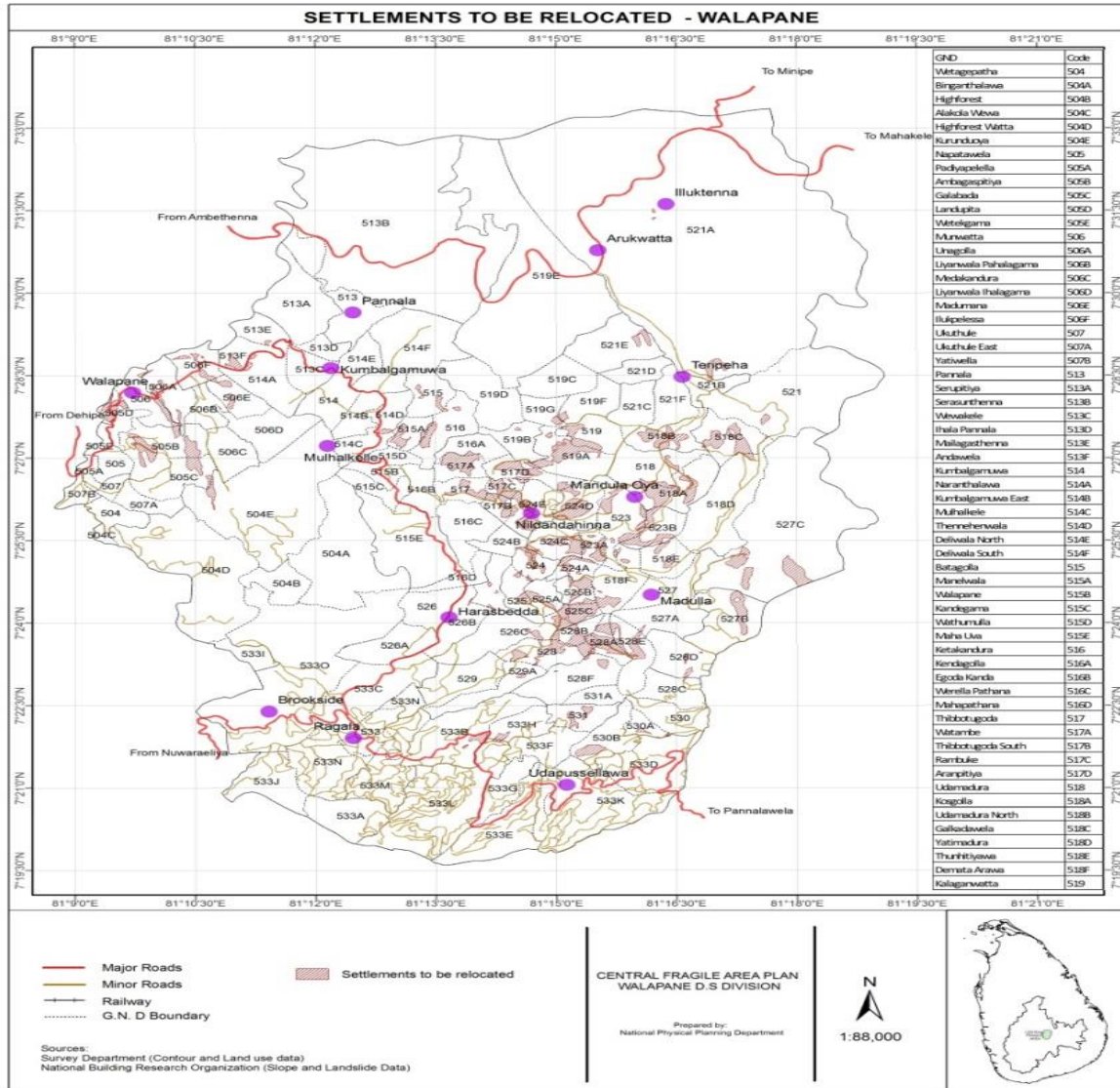


**Map 02. Walapone divisional secretariat in the district of Nuwaraeliya**

Source – departmental source

- ❖ Identification and mapping of basic disaster prone and settlements that should be evacuated

As at now, this phase has been accomplished and prepared 87 maps in respective divisional secretariats as can be seen below



Map 03 - Walapone divisional secretariat in the district of Nuwaraeliya

Source – departmental source

- ❖ Identification of appropriate lands/areas to evacuate and resettle the residents of vulnerable areas and formulation of resettlement plans

Currently, this phase is being implemented. Identification of appropriate lands/areas and formation of resettlement plans are being carried out by the focal responsible officers of the respective districts.

## 6.5 Formulation of Regional Plans

The core role of division is to formulate plans for a geographical premise which is relatively smaller to the country but larger than a city. Honorable Prime Minister has extended his support, to publish through gazette notification, having demarcated geographical locations as provinces and regions to address our requirement.

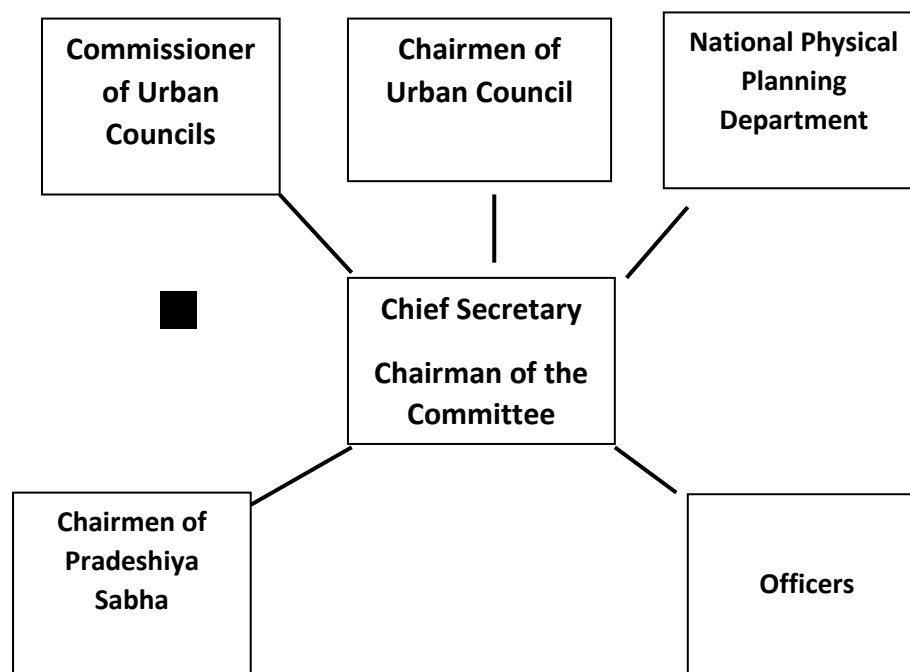
### 6.5.1 Formulation of Regional Plans

- ❖ Regional plans are formulated by the Regional Planning Committee
- ❖ Regional Planning Committee is chaired by the Secretary of the Provincial Council.
- ❖ All chairmen of Urban Councils/pradeshia (local Government) Sabha, Commissioner of Municipal Council within the Province are the members of the Regional Planning Committee
- ❖ Further, certain officer in the public establishment are also included in this committee

The Physical Planning department is, particularly, established extend its support to Provincial council through formation of Regional Plans for the respective provincial councils.

Thus, the department extends following supports to the Provincial Councils;

- ✓ Providing technical support
- ✓ Provision of expertise service on any required discipline
- ✓ Supports on convene meetings, presentations and to obtain feedbacks and comments from the general public.
- ✓ Supports to collect relevant information from any relevant establishments
- ✓ Supports to formulate plans and presentations
- ✓ Supports to disburse funds required for implementation of plans



**Diagram 03 : Regional Planning Committee**

Source - Departmental source

## 6.6 Activities completed during 2015

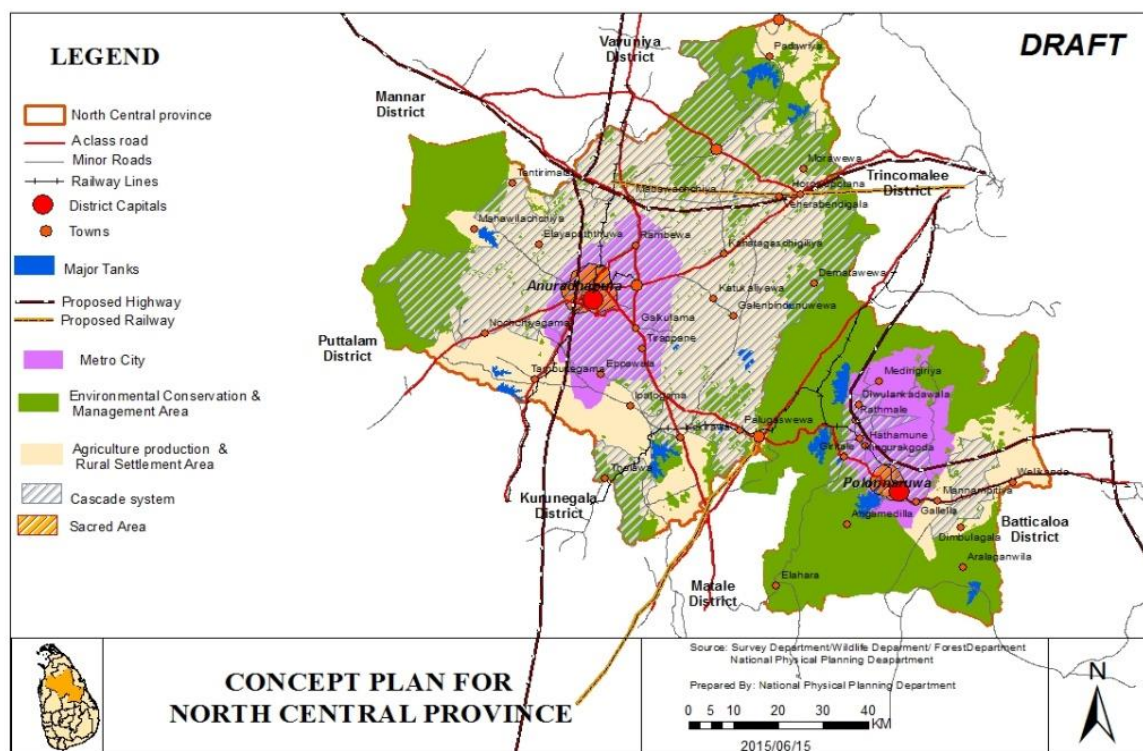
### 1. Updating Regional Planning for the following provinces

1. Uva Province
2. Sabragamuwa Province
3. Northern Province
4. North Western Province
5. Central Province

### 02. Following tasks have been accomplished in formulation of Regional Planning of North Central Province

01. Carrying out discussions on structure and content of the regional plan with the officials of the Department Planning of North Central Province
02. Formulation of conceptual planning for North Central Province and presenting the same for the officials of the Planning department of the North central province.

### Map 04 Sketch Plan formulated for the North Central Province



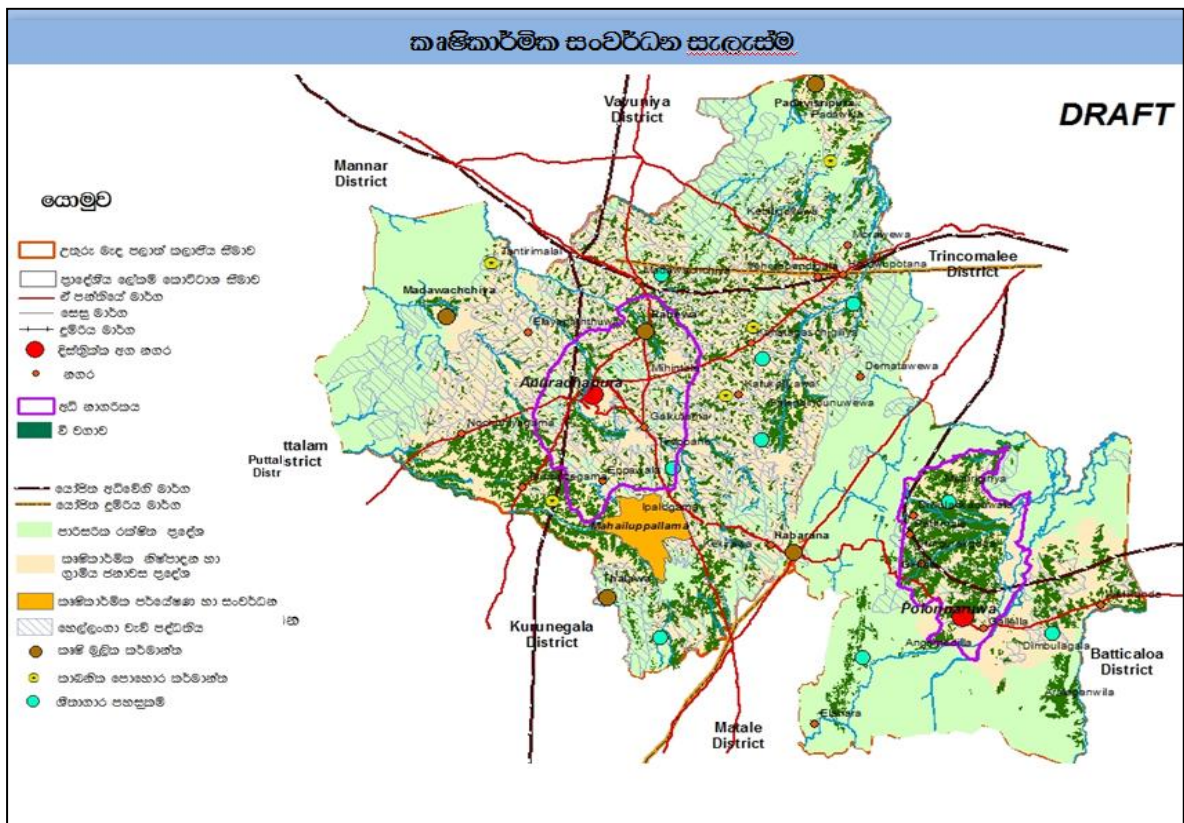
Source - Departmental source

3. Meeting the relevant officer to collect data to formulate Agricultural Development Plan, Collect relevant information on contribution of Phosphate deposit to the Sri Lankan economy and collection of the background information, Observation of Phosphate deposit – Eppawala



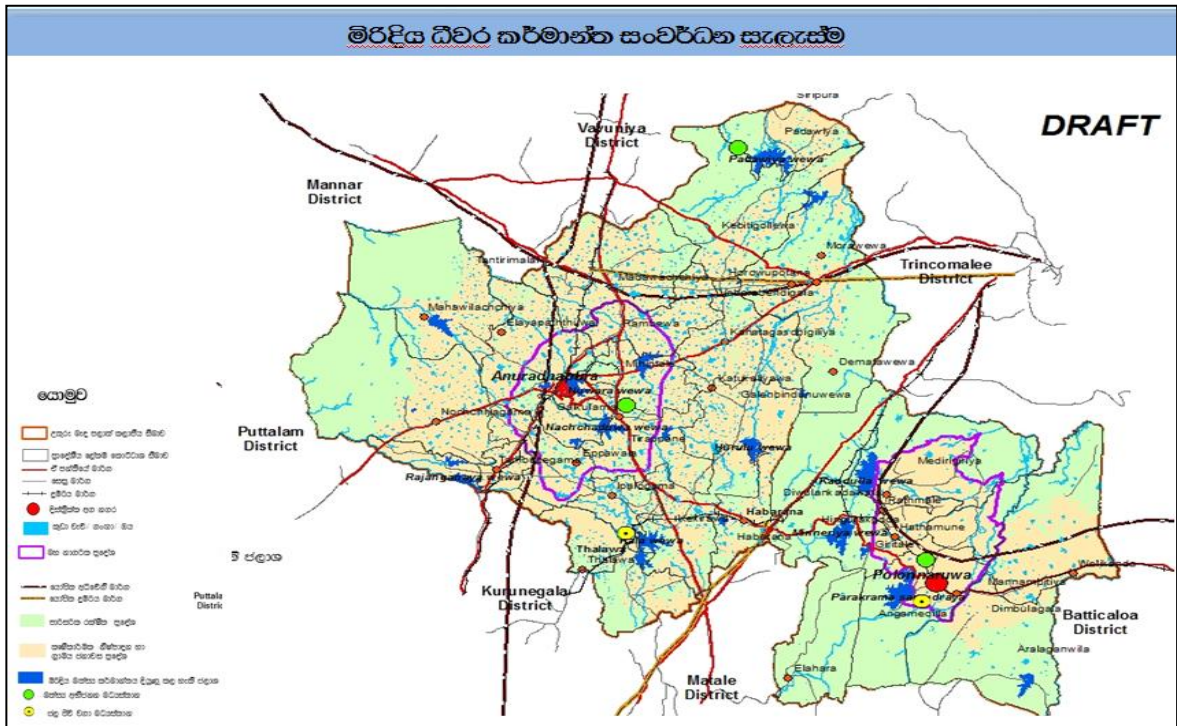
- Provincial Agriculture Department
- Field crop Research Institute – Mahailuppallama
- Lanka Phosphate Public Company

Meeting with officers of Department of Agrarian development to collect further information in formulation of Agricultural Development Plan and collecting Agricultural Research Publication from Hector Kobbekaduwa Agricultural Research and Training Institute’

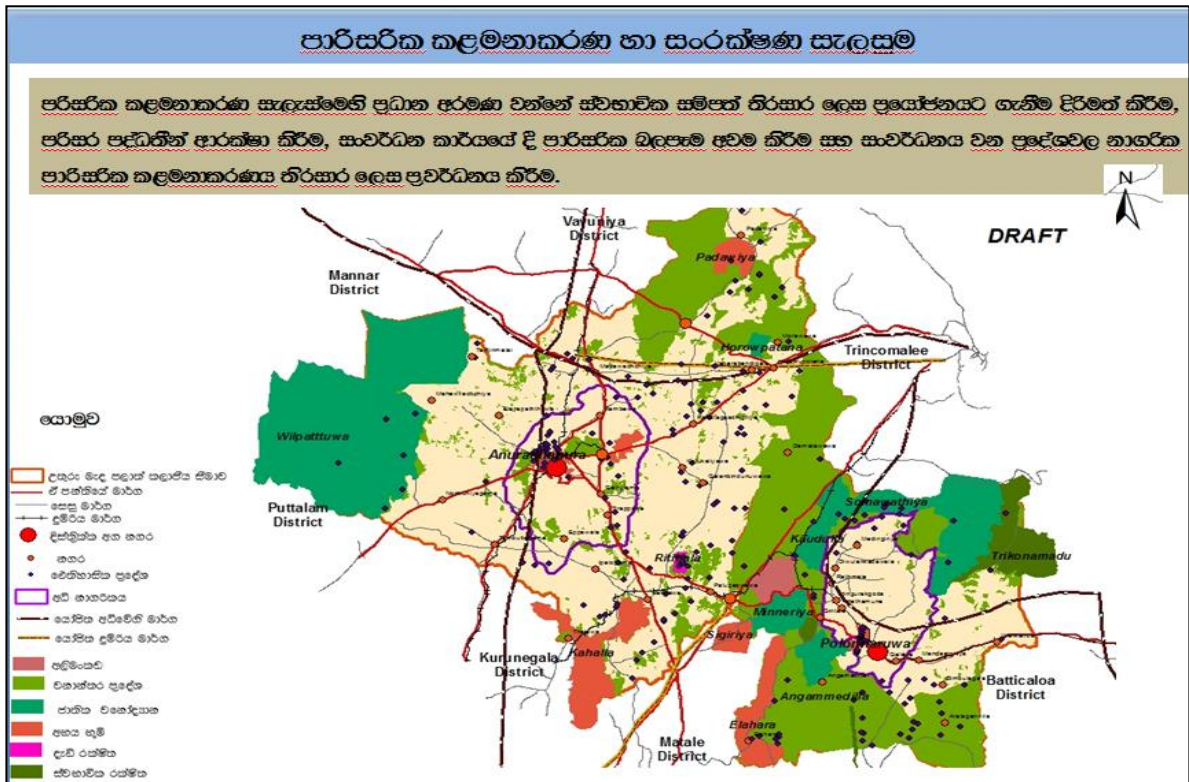


**Map 05 : Agricultural development Plan**

Source – Departmental Source



Map 06 Freshwater Fisheries Development Plan



Map 07 Environmental Management and Conservation Plan

Source – Departmental Source

## **7. Performance of Local Physical Planning Division**

### **7.1 Role**

Local Physical Planning Division, mainly, engages in extending collaboration towards establishments of Provincial Councils to formulate plans for towns that are recognized as prioritized towns by regional physical plans and providing technical assistance required for development initiatives of sacred lands.

### **7.2 Staff**

Under the direct supervision of the Director (Local Physical Planning), 12 development assistants, 03 development officers, 04 physical planning assistants and 02 office assistants serve in the division.

### **7.3 Role of the Local Physical Planning Division**

- Preparation of plans for small towns
- Implementation of aforesaid plans under project such as “Puraneguma”
- Formulation of resettlement plans for disaster affected areas
- Declaration of recognized sacred lands as urban development areas through gazette notifications
- Preparation of development plans for such sacred lands
- Implementation of relevant projects at sacred areas such as Aunuradhapura, Kataragama, Mahiyangana, Muthiyangana, Kandy, Kelaniya and Aluviharaya.
- Engage in observations and providing recommendation on various land utility pattern by the Divisional Secretariats and other establishments
- Implementation of special project entrusted to the department by the Ministry under special circumstances

### **7.4 Purposes of formulating Small Town Planning**

- Ease of access to basic urban facilities towards the majority (70%) of the population in Sri Lanka
- Shifting investment opportunities that exist in the close proximity to rural areas
- Establish formal urban regions in the proximity of the dwellings of the people who endeavor to informal urbanization



- Establishment of “a total rural-urban system” that is connected with “Super Mega Cities”
- Endow socially, culturally, archaeologically and environmentally significant rural-urban system to the general public.
- Pave the foundation required to “Total Rural System” with all the ample infrastructural facilities that are enjoyed by the mega cities

### **7.5 Activities accomplished during the year 2015**

1. Coordination with “Doramadalawa Programme” telecast on ITN for the celebration of “World Cities Day” – 2015
2. Telecast “360 Programme” on “Derana” television channel for the celebration of “World Cities Day” – 2015
3. Organizing consultation summit on “ National Physical Planning Framework for the City of Tomorrow”
4. Construction of “Dhathu Mandiraya” which is one of the projects of the in the “Getabaruwa Raja Maha Viharaya development plan”
5. Preparation of draft Act to establish Anuradhapura Heritage Foundation
6. Formulation of Development Plan for “Niyamgamdora Purana Vihara” - Kotmale
7. Preparation of landscaping for the sacred land of “Matale Alu Viharaya”
8. Redemption of compensation for the land case trialed against land acquisition from the sacred land od “Saman devalaya” at Rathnapura, in Sabragamuwa province, settlement of electricity bill arrears, preparation of plans for vehicle parking and landscaping
9. Preparation of estimates for refurbishment of abandoned and ruined tourists bungalow located at Seruwawila sacred land for the rest house that required refurbishment and further Obtaining the letter of vesting from diseased Venerable Rev. Seruwawila Saranakiththi in order to get retransferred unto the department.
10. Formulation of plan for the multi-purpose building of St. Annes Church at Thalawila and initiating preparatory work to update the relevant development plan
11. Formulation of development plan for the Kotawehera sacred land
12. Preparation of plan to erect a residence for Buddhist reverent at premises of the sacred land of “Kithsirimevan Rajamahavihara” at Pokunuwita, Horana’
13. “Ranpath Vihara, Thotagamuwa” - Attend to obtain the surveying plan

14. Thalathuduwa Aaranya Senasanaya - Initiating negotiations to resolve the land issue
15. Seenigama Dewalaya at Hikkaduwa - Requisition made for the surveying plan
16. Yakkalamula Sri Pushparama Vihara – Field monitoring
17. Planning for new settlements for the residents of affected/vulnerable areas (Matale, Rathnapura, Nuwaraeliya, Badulla, Kegalle, Matara, Kandy, Gampaha, Attanagalle)
18. Preparation of estimates for the multi-purpose building of Sri Kataragama Dewalaya – Embekke
19. Preparation of architectural designs for the relevant building for the drivers and watchmen at Asgiriya sacred land.
20. Publishing Gazette notification for the sacred land of Sri Kataragama Devalaya – Badulla.
21. Publishing Gazette notification for the sacred land of Katugahagalge Raja Maha Viharaya
22. Publishing Gazette notification for the sacred land of Sri Sudarshanarama Purana Vihara at Batapotha, Battaramulla.
23. Publishing Gazette notification for the sacred land of Galpihilla Raja Maha Viharaya
24. Transform and declare the Sri Sudarshanarama Purana Vihara at Batapotha, Battaramulla as a sacred land
25. Formulation of sketch plan for the Building for Abhiwanarama Vihara Dharmashala – Kataragama
26. Refurbish the Director General’s Room of Tourist Bungalow – Kataragama (Door, Shutters and A/C)
27. Color washing, which cost Rs 10,000/=, the iron fence of office of the Physical Planning Department located in the sacred area for the Esala celebration – 2015
28. Submission of Project Report on “RajamahaViharaya Building Development Project – Mulkirigala” to Hon. Sajith Premadasa
29. Organizing a March for the celebration of “World Cities Day” and participating
30. Conducting the South Asia Urban Session – 2015 on 21.09.2015 at Cinnamon Lake Hotel.
31. Organizing inauguration ceremony for the Western Province Mega Polis Development Plan
32. Coordination of Development Initiatives of Dimbulagala sacred land
33. Coordination of Development Initiatives of Somawathi sacred land

34. Engaging coordination activities in collaboration with Ministry of Tourism to formulate an integrated planning covering all the tourist attractive places in Pollonnaruwa
35. Coordination of Development Initiatives of Siripura Seelalankara sacred land
36. Coordination of Development Initiatives of sacred land of Minneriya Mahasenpura Vihara
37. Coordination of all initiatives of Pulathisi Rest House in Pollonnaruwa
38. Coordination of Development Initiatives of Hathagoda sacred land in Hambantota
39. Coordination of Development Initiatives of Seenigama Dewalaya sacred land
40. Coordination of Development Initiatives of Henakaduwa sacred land in Hambantota
41. Engaging development initiatives at premises of Rangiri Viharaya in Hambantota district
42. Formulation of development planning for small towns

Planning activities for 45 small towns that were identified during 2014, are in the process and further all the commissioners of local government were formally informed to submit their proposals for 2 most suitable service centers from each district in order to formulate development plans for 50 additional cities. Accordingly, following small towns have been identified for formulating plans;

***Towns that were selected for planning of Small towns***

<i>No</i>	<i>Province</i>	<i>District</i>	<i>Local Government</i>	<i>Town</i>
1.	Uva	Badulla	Passara	Passara
			Soranatota	Soranatota
		Moneragala	Siyambalanduwa	Ethimale
			Buttala	Okkampitiya
2.	Western	Colombo		
		Gampaha		
		Kalutara	Bandaragama	Millaniya
			Matugama	Horawala
3.		Galle	Na-goda	Thalgaswala
			Akmeemana	Hiyare
				Thalgampala
		Matara	Dikwella	Pehembiya
			Akuressa	Didiyagala
		Hambantota	Angunakolapelessa	Udayala
Tangalle	Vitharandeniya			
	Central	Kandy	Poojapitiya	Poojapitiya

			Ganga Ihala Korale	Kurunduwatte
		Matale	Ukuwela	Ukuwela
			Dambulla	Seegiriya (UDA)
		Nuwaraeliya	Kotmale	Poonadalu-oya (UDA)
			Ambagamuwa	Upcot
5.	North Central	Anuradhapura	Padaviya	Padaviya Town
		Pollanaruwa	Welikanda	Sewanapitiya
			Thamankaduwa	The balance portion of the area of Thamankaduwa PS
6.	Sabragamuwa	Ratnapura	Eheliyagoda	Dammulla
			Nivithigala	Dehiwala
		Kegalle	Mawanella	Hemmathagama
			Yatiantota	Kitulgala
7.	North Western	Kurunegala	Nikaweratiya	Rasnayakapura
			Ibbagamuwa	Hiripitiya
			Kurunegala	Wellawa
			Ridigama	Dodamgaslanda
		Puttalam	Anamaduwa	Pallama
			Nawagattegama	Nawagattegama
			KAruwalagasweva	Saliyaweva
8.	Eastern	Trincomalee	Brought under UDA	
		Ampara	Padiyatalawa	Padiyatalawa
			Uhana	Uhana
			Dehiattakandiya	Dehiattakandiya
		Batticaloa	Manmunai South	Kalawanchikudi
			Manmunaipattu	Ariyampathy
			Karalaipattu	Walachchenai
9.	Norther	Jaffna	Valley South	Sukkanama
			Nalloor	Thurinelvaley
		Kilinochchi	Poonahari	Maththawilnadu
			Machchlapallai	West Pallai
		Mullaitivu	Karaituraipattu	Mullivalaithinar
			Puthukudiyiruppu	Oddusuddan
		Mannar	Nanattan	Nanattan
			Manthai	Adapath
		Vavuniya	Vavuniya South	Omanthai
			Vavuniya North	Nedunkerny

Source – Departmental Source

43. The draft of the Town and Country Planning Act which was submitted for the amendment by Legal Draftsman, was submitted to the Minister to make amendments as follows;

#### **Previous clause**

i. The minister of Buddhist and Religious Affairs shall declare of any location as “Sacred Land” by any new clause updated/included to the Act with the prior information to the Line Minister of Physical Planning.

#### **Preferred Amendment**

i. Declaration of any identified land as a “Sacred Land” by any updated new clause to the Act, by the minister of Buddhist and Religious Affairs subject to the prior approval of the Line Minister of Physical Planning and the boundaries demarcated shall be published by the gazette notification.

Although the resolution was produced to obtain the consents of the minister, the anticipated consents and agreement could not be obtained and then the process became defunct.

## **8. Performance of the Research Division**

### **8.1. Purpose**

01. The main purpose of establishment of the Research Division is to carry out Researches on different topics that are associated with the functions of Physical Planning.

02. Maintain a data archive for the department

03. Maintain a Resource Library for the functions of the Department

### **8.2 Staff**

As at the year 2015, under the supervision of a Director, two (02) Development Assistants, two (02) Physical Planning Assistants and One (01) Development Officer have been appointed for the Research Division.

### **8.3 Activities accomplished in 2015**

#### **1. Formulation of Town Planning Theory**

The existing Town Planning Theories have been originated to address the requirements of the Western World. The Publications such as “Mahawansaya” and archaeological findings, evident that, we possessed our inherent town planning theories, in the history. These theories were formulated to suit our political, cultural, religious and natural environment. Likewise, there are no satisfactory impacts and results gained from the plans which were formulated in accordance with the Western Physical Plans to address issues such as global

warming, green house effects. Hence, it is aimed at formulating a town planning theory that suit to our country which is a South Asian Country.

## 2. Formulation of Green City Guidelines

# 09. Performance of the Engineering Division

## 9.1 Role

The core role of the division is to efficient accomplishment of engineering service that is required in planning and implementation of National plan, Zonal plan , Regional plan , Small Towns, Community , Buildings and landscaping plan.

## 9.2 Staff

Functions of the divisions are carried out in three sub-divisions such as Engineering, overseeing, quantitative surveying under the direct supervision of Director of the Engineering division. Under the Director – Engineering, there are two assistant engineers, two overseers, two quantitative surveyor, a development officer and two survey assistants have been deployed in the service.

## 9.3 Day-to day routing activities.

- Preparation of structure for buildings
- Provision of consultancy for constructions
- Preparation of estimates
- Preparation of payment reports and vouchers.
- Land acquisition and transfer of state land unto provincial council establishments for the purpose of land surveys and development activities.
- Carry out land utilization surveys and prepare reports for town planning
- Formulate suitable development plans, carry out field observations, land surveying, mapping, preparation of contour lines and establishing town plans, construction plans on the land that suit in development planning.
- Administration of construction sites in building constructions, landscaping and maintenance related activities.
- Overseeing, supervision, preparations of bills and vouchers, attest bills, reports on redemption of security deposits and submission of progress reports revenant to building constructions and landscaping.

- Preparation of estimates for maintenance of buildings possessed by the department and engage in maintenance activities

#### 9.4 Activities accomplished during the year 2015

Serial No	Project	Activities accomplished
1	Kelaniya sacred land	Preparation of rough estimation for repairing activities of the project office, and fixing the main door
2	Thelwatta Purana Thotagamu Ranpath Maha viharaya	Preparation of estimates including bills of quantities (BoQ) for fixing electric lamps in the proposed building of Pirivena, Dhana Shala and the entrance
3	Getabaruwa Ranpath Maha viharaya	Preparation of structural planning and rough estimation for the Dhathu Mandiraya (Palace of Tooth Relic)
4	Anuradhapura Sacred Land	01. preparation of rough estimation and bills of quantities (BoQs) for the refurbishment of existing project office and tourist bungalow 02. preparation of rough estimation for the lavatory units 02. Preparation of structural planning and rough estimation for the multi-tasks building
5	Kandy Sacred Land	Preparation of rough estimation for the proposed tourist bbungalow at Pallekele
6	Badulla Paththini Dewalaya	Preparation of rough estimation for proposed canals
7	Urapola Medalankaramaya	Preparation of estimates with structural planning and bills of quantities (BoQs) for the Dhathu Mandiraya (Place of Tooth Relic)
8	Building of National Physical Planning at Sethsiripaya	Preparation of estimation with bills of quantities (BoQs) for refurbishment of the National Physical Planning Building
9	Thelwatta	Preparation of structural planning and estimation with bills of quantities (BoQs) for the Daham School (School for religious education) and vocational training center.
10	Tourist Bungalow at Mahiyangana	Preparation of estimation with bills of quantities (BoQs) for the tourist bungalow

11	Aluviharaya - Matale	Preparation of estimation for landscaping
12	Muthiyangana Sacred Land	Preparation of structural planning and estimation with bills of quantities (BoQs) for proposed project office building
13	Pilikuththuwa Raja Maha Viharaya	Preparation of estimation for gateway of the temple
14	Embekke Raja Maha Viharaya	Preparation of rough estimates for proposed kataragama dewalaya
15	Buduge -Kanda	Preparation of estimate for proposed gateway and Bodhi Ghara
16	Thibbotugoda Sri Subramaya	Preparation of estimate for proposed gateway and Bodhi Ghara
17	Alawathugoda	Preparation of rough estimate for the side wall (Bodhi Prakaraya) in Saman dewalaya
18	Borella Gothami Viharaya	Preparation of rough service charges for dhana shala (alms hall), bikkhu's residence, multipurpose building
19	Pokunuwita	Preparation of estimates for proposed hermitage (Residence for theras)

### 9.5 Activities completed in overseer division -2015

Serial No	Project	Activities completed
1	Diyawanna park	Maintenance activities of the bungalow of the department
2	Weligepola	Divisional secretariat –land survey for the cemetery
3	Kelaniya	Budgeting for office maintenance
4	Pallekele	conservation of department land
5	Getabaruwa	Draft reports building construction plans
6	Seruwawila Sacred lands	Preparation of estimates for refurbishment of the guest house
7	Getabaruwa	Surveying activities and land inspections
8	Thalawila	Preparation of construction plans, surveying for construction of Munneswaram Hindu Temple and the mosque.
9	Thantirimale	Preparation of reports on redemption of security deposits
10	Divisional Secretariat - Kolonna	Submission of land inspection reports
11	Anuradhapura	Mahameuna garden
13	Dimbulagala Maha Viharaya	Preparation of BoQs for building construction
14	Meewitigamma temple	Prepare maps for planning
15	Narammala Sumanaramaya	For building surveying related activities
16	Pagoda temple	Preparation of payment details for building construction activities



17	Divisional Secretariat - Ambagamuwa	Produce report on land inspections
18	Kataragama sacred land	Surveying activities for plans

Source – Departmental Source

## 10. Architecture Division

### 10.1 Role

The main role of the division is formulation of Plans and maintenance (supervision, overseeing/sites) based upon the sketch plans and layouts (that are prepared by Architects, Engineers, Planning Assistants) produced to the Planning Office Assistants through the Director (Architecture Division). Further, the division is responsible for storage and archive, making additional copies, protection & safeguard of such plans formulated by the division.

### 10.2 Staff

The staff is under the direct supervision of the Director –Architecture Division. The division comprise of Assistant Director/Deputy Director, three (03) Planning Assistants, and 21 planning technicians. Under the director supervision of the Director (Engineering), estimated are formulated by the Planning office Assistant with the support of a planning office assistant and required number of planning technicians. The plans formulated by relevant Architects and Engineers are produced to the Director of Architecture division, and then are handed over to Planning Office Assistants for formulation of Planning and relevant layout designs based on the Plans received.

A Planning assistant in-charge, a Planning Printing Technician, a Designs updater and an office assistant are deployed in the division to take charge of storage, archive, making copies, safeguarding of such plans formulated.

### 10.3 Layout plans completed during 2015

Serial No	Project	Activities completed
A/AR/273/2015	Anuradhapura	Draft a plan for proposed lavatory unit
A/ST/274/2014	Alms hall - Aluthnuwara	Design the foundation and structural framework
A/ST/275/2015	Bikkhu's residence - Aluthnuwara	Design the reinforcement for the beam and the slab
A/ST/276/2015	Library Building	Draft the beam of the second floor
A/ST/277/2015	Library Building	Design the reinforcement for stare case
A/ST/278/2015	Library Building	Draft the beam of the second floor
A/ST/279/2015	Library Building	Draft the beam of the first floor
A/ST/280/2015	Library Building	Draft the beam of the first floor
A/AR/281/2015	Lowamahapaya - Anuradhapura	Prepare the design for proposed "Sankalanaya" and Poyageya"
A/AR/85/2015	Budugekanda Walagamba Vihara	Prepare designs for Bodhighara
B/AR/86/15	Budugekanda Walagamba Vihara	Draft plan for proposed gateway
B/AR/87/15	Budugekanda Walagamba Vihara	Draft plans for proposed lavatories
B/AR/88/15	Gothami Vihara - Borella	Draft plans for Bkkhu's residence and alms hall
B/AR/89/15	Budugekanda Rajamaha Vihara	Draft plans for the proposed palace
B/AR/90/15	Gothami Vihara - Borella	Draft plans for proposed multipurpose building
B/AR/91/15	Gothami Vihara - Borella	Draft plans for the floral chamber
B/AR/92/15	Gothami Vihara - Borella	
B/AR/93/15	Budugekanda Walagamba Vihara	Draft plans for the meditation hall
B/AR/94/15	Budugekanda Walagamba Vihara	Design for ceiling
B/AR/95/15	Budugekanda Walagamba Vihara	Draft plans for the gateway
D/PL/95/15	Gothami Vihara - Borella	Draft plans for the gateway and landscaping
D/PL/51/15	Kotavehera -Dedigama	Draft developed plans
D/PL/52/15	Doluwa Yerowatta	Design Landscaping
D/PL/53/15	Doluwa Yerowatta	Design Landscaping
D/PL/54/15	Doluwa Yerowatta	Design Landscaping
D/PL/55/15	Dimbulagala Sacred Land Planning Scheme	Design plans for the gateway
D/PL/56/15	Dimbulagala Sacred Land Planning Scheme	Details for reinforcement and column
D/PL/57/15	Dimbulagala Sacred Land Planning Scheme	Details for reinforcement and column
D/PL/58/15	Dimbulagala Sacred Land	Details for reinforcement and concrete

	Planning Scheme	
D/PL/59/15	Dimbulagala Sacred Land Planning Scheme	Details for reinforcement and concrete
D/PL/60/15	Dimbulagala Sacred Land Planning Scheme	Details for reinforcement and beam
D/PL/61/15	Dimbulagala Sacred Land Planning Scheme	Details for reinforcement and beam
D/PL/62/15	Dimbulagala Sacred Land Planning Scheme	Details for reinforcement and beam
D/PL/63/15	Dimbulagala Sacred Land Planning Scheme	Details for reinforcement and beam
K/AR/308/15	Katugahagalle Rajamaha Vihara	Draft plans for proposed gold-plated fence
K/AR/309/15	Katugahagalle Rajamaha Vihara	Draft plans for proposed “Dharma Shala”
K/AR/310/15	Katugahagalle Rajamaha Vihara	Draft plans for proposed Lavatory
K/AR/311/15	Katugahagalle Rajamaha Vihara	Draft plans for proposed Alms hall and Bkkhu’s residence
K/AR/312/15	Katugahagalle Rajamaha Vihara	Draft plans for proposed gateway
K/AR/313/15	Kataragama Sri Vihara	Draft plans for proposed “Dharma Shala”
G/AR/46/15	Getabaruwa Rajamaha Vihara	Draft plans for proposed “Dhathu Mandira”
G/AR/47/15	Getabaruwa Rajamaha Vihara	Draft plans for proposed “Dhathu Mandira”
G/AR/47-1/15	Getabaruwa Rajamaha Vihara	Draft plans for proposed “Dhathu Mandira”
G/ST/48/15	Getabaruwa Rajamaha Vihara	Structured details
G/ST/50/15	Getabaruwa Rajamaha Vihara	Draft plans for the beam
G/AR/51/15	Getabaruwa Rajamaha Vihara	Draft plans for landscaping
G/AR/52/15	Getabaruwa Rajamaha Vihara	Draft plans for the resting place -03
G/AR/53/15	Getabaruwa Rajamaha Vihara	Draft plans for the resting place -01
G/AR/54/15	Getabaruwa Rajamaha Vihara	Draft plans for the resting place -02
G/ST/55/15	Getabaruwa Rajamaha Vihara	Structured details (beam at roof level)
G/ST/56/15	Getabaruwa Rajamaha Vihara	Structured details of the stare case
G/ST/58/15	Getabaruwa Rajamaha Vihara	retaining walls
G/ST/59/15	Gothami Vihara	Draft plans for the gateway
H/PL/52/15	Re-processing plan for Helakada-Ketuhena land	Designing for landscaping
U/AR/25/15	Ududumbara	Designing for landscaping
M/AR/284/15	Sacred land development scheme - Mutiyangana	Draft plans for the Proposed office building of NPPD
M/AR/286/15	Matale Alu Viharaya	Designing for landscaping
M/AR/287/15	Matale Alu Viharaya	Design plans for alms hall
M/AR/288/15	Meevithigammana	Design plans for proposed “Bodhi Fence”

P/AR/137/15	Polonmaruwa	Design plans for proposed “Buddha Statue”
P/AR/138/15	Polonmaruwa	Design plans for proposed “Bikkhu residence”
P/AR/139/15	Polonmaruwa	Design plans for proposed “lavatory”
P/AR/140/15	Polonmaruwa	Design plans for proposed “water tank”
P/AR/141/15	Polonmaruwa	Design plans for proposed “rest room”
P/AR/142/15	Pelmadulla	Designing for landscaping
P/AR/143/15	Pallekelle	Draft plans for proposed tourist bungalow
P/AR/144/15	Pelawatte	Interior decorations of parliament Ministry
P/AR/145/15	Pokunuwita	Draft plans for bukkhu’s residence
P/AR/146/15	Polonmaruwa	Draft plans for Daham (Religious )school
P/AR/148/15	Polonmaruwa	Draft plans for the foundation and column details
T/AR/58/15	Thotagamuwa Ranpath Rajamaha Vihara	Draft plans for the proposed rest room
T/AR/59/15	Thotagamuwa Ranpath Rajamaha Vihara	Draft plans for the proposed Bikkhu’s residence
T/AR/60/15	Thotagamuwa Ranpath Rajamaha Vihara	Design planning for proposed multipurpose building
T/AR/61/15	Thotagamuwa Ranpath Rajamaha Vihara	Design planning for proposed multipurpose building

Source – Departmental Source

## 11. Performance of the Accounts Division

### 11.1 Objectives of the Accounts Division

Implementation of effective and efficient Financial Management of the annual budgetary financial provisions for the department in compliance with accounts circular, financial regulations, establishment code and rules and regulation prescribed in the other public circulars

### 11.2 Service

1. Payment of salaries, wages and other remunerations for the staff of the department and staff of the other projects
2. Preparation of monthly accounts summary with regard to the financial transactions occurred and submitting the same to the treasury
3. Preparation and submission of Annual Account
4. Procurement and storage of goods that are required by the department and other affiliated establishments
5. Asset Management
6. Submission of relevant documents to the Auditor General and attend audit queries
7. Granting loans and recovery under the “Advance – “B” Account”

### 11.3 Staff

The aforementioned duties and activities are accomplished by an accountant, seven (07) Management Assistants and two (02) Office Assistants who are deployed under the direct supervision of the Chief Accountant.

#### 1. Expenditure against the provision of each individual salaries and wages -2015

	Estimate in year 2015(Rs.)	Transfer of FR 66/69 (Rs.)	Supplementary Estimate (Rs.)	Total provisions (Rs.)	Total Expenditure (Rs.)
Salaries and wages	Estimate in year 2015 (Rs.)	-	26,000,000	133,200,000	126,476,434

#### 2 . Expenditure against the provision of each other recurrent expenditure item -2015

Expenditure Item	Estimate in year 2015(Rs.)	Transfer of FR 66/69 (Rs.)	Supplementary Estimate (Rs.)	Total provisions (Rs.)	Total Expenditure (Rs.)
Other recurrent cost	50,550,000	4,500,000	-	46,050,000	42,589,027

#### 3. Revenue Report of the Year 2015

Description	Original Estimate (Rs. Million)	Revised Estimate (Rs. Million)	Revenue of 2015 (Rs. Million)
2002-01-01	1.5	-	1.47
2002-02-99	1.2	-	1.20
2003-99-00	0.1	-	1.12

#### 4 . Expenditure against the provision of each capital expenditure item -2015

Expenditure Item	Estimate in year 2015	Transfer of FR 66/69 (Rs.)	Supplementary Estimate	Total provision	Total Expenditure
311-1-1-0-2001	200,000	-	-	200,000	122,264
311-1-1-0-2002	150,000	-	-	150,000	-
311-1-1-0-2003	750,000	-	-	750,000	750,000
311-1-1-0-2102	100,000	4,500,000	-	4,600,000	4,500,425
311-1-1-0-2104	56,000	-	-	50,000	-
311-1-1-0-2401	250,000	-	-	250,000	250,000
311-1-1-0-2502	7,000,000	-	-	7,000,000	2,018,569

#### 5 . Limit of the Advance Account of the Public Officers & Actual figures - 2015

Subject No - 311011

	Ceiling	Actual Value
Maximum Debit Limit	12,475,000.00	10,173,324.81
Minimum credit limit	7,675,000.00	11,908,966.42
Maximum Debit Balance Limit	60,000,000.00	30,518,464.34

Source – Departmental Source